

Today's a match sponsored by ELMS LODGE COUNTRY CLUB, Briton Ferry

SWANSEA CITY

- 1 PETER GUTHRIE
- 2 CHRIS HARRISON
- 3 CHRIS COLEMAN
- 4 ANDY MELVILLE
- 5 ALAN KNILL
- 6 ROBBIE JAMES (Capt)
- 7 ALAN DAVIES
- 8 TOMMY HUTCHISON
- 9 SEAN McCARTHY
- 10 PAUL RAYNOR
- 11 PETER BODAK
- 12 GARY EMMANUEL
- 14 JOHN LEWIS

Changes

ROTHERHAM

- 1 KELHAM O'HANLON
- 2 COLIN DOUGLAS
- 3 PHIL CROSBY
- 4 TONY GREALISH
- 5 NIGEL JOHNSON
- 6 JOHN GREEN
- 7 DARAL PUGH
- 8 JOHN DUNGWORTH
- 9 PAUL HAYCOCK
- 10 CLIVE MENDONCA
- 11 WINSTON CAMPBELL
- 12 SHAUN GOODWIN
- 14 JOHNNY BUCKLEY

Changes

MITRE MATCH BALL

Donated by

DUDLEY & SWANSEA METALS
 VAUGHAN SOUND SYSTEMS LTD
 BRISCO WILLIAMS & SONS

MATCH OFFICIALS

Referee: Mr. L. C. Shapter (Torquay)

Linesmen:

Mr. B. P. Bishop (Bath) (Red Trim)
 Mr. B. L. March (Bridgewater) (Yellow Trim)

BUMPER TO BUMPER

OXFORD STREET · SWANSEA · Tel: 42690/1

VOTED WALES' No. 1
 ACCESSORIES SHOP

WALTERS PRINTERS, CLYDACH (0792) 842557

Welcome to the Vetch

BARCLAYS LEAGUE DIVISION 4



PLAY OFFS - SEMI-FINAL FIRST LEG

ROTHERHAM

SUNDAY, 15th MAY, 1988
 Kick Off 3.00 p.m.

The SWAN

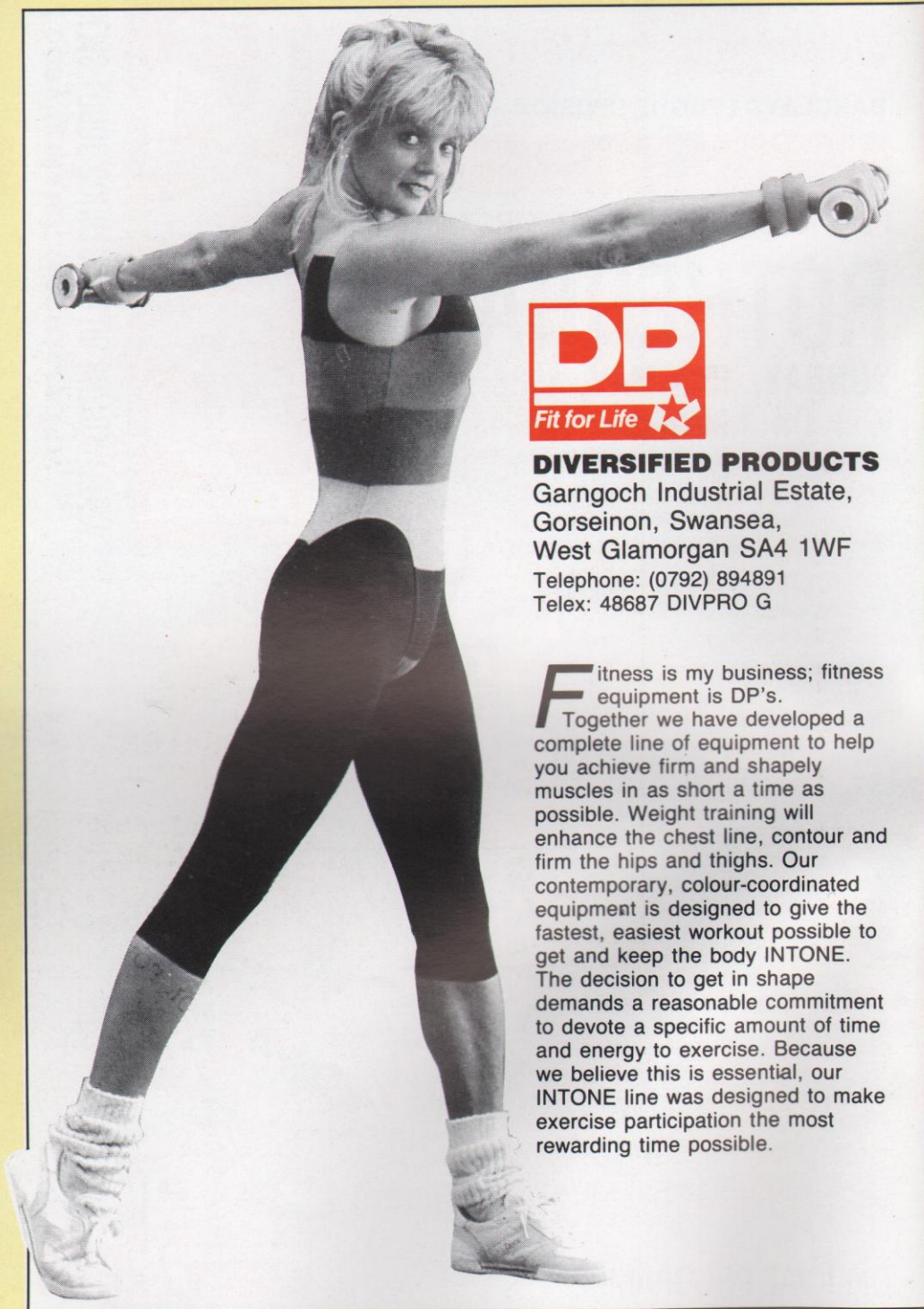
Today's Match Sponsored by
 ELMS LODGE COUNTRY CLUB BRITON FERRY



SPONSORED BY DIVERSIFIED PRODUCTS

OFFICIAL PROGRAMME





DIVERSIFIED PRODUCTS

Garngoch Industrial Estate,
Gorseinon, Swansea,
West Glamorgan SA4 1WF
Telephone: (0792) 894891
Telex: 48687 DIVPRO G

Fitness is my business; fitness equipment is DP's.

Together we have developed a complete line of equipment to help you achieve firm and shapely muscles in as short a time as possible. Weight training will enhance the chest line, contour and firm the hips and thighs. Our contemporary, colour-coordinated equipment is designed to give the fastest, easiest workout possible to get and keep the body INTONE. The decision to get in shape demands a reasonable commitment to devote a specific amount of time and energy to exercise. Because we believe this is essential, our INTONE line was designed to make exercise participation the most rewarding time possible.



Swansea City FC
VETCH FIELD, SWANSEA
Telephone: (0792) 474114

President:
IVOR PURSEY, M.B.E.

Chairman:
DOUG SHARPE

Vice Chairman:
GLYN HAMMOND
F.C.A., M.B.I.M.

Directors:
MAL GRIFFITHS
HARRY HYDE, F.Inst.D.

Manager:
TERRY YORATH

Commercial Manager:
TONY RUSSELL

Physiotherapist:
KEN DAVEY

Hon. Medical Officer:
Dr. J. C. TANEJA

Stadium Manager:
HAROLD WOOLACOTT

Programme Editor:
REG PIKE, I.S.M., T.D.

Terry Yorath's View

Dear Supporters,

Many, many thanks for the support and encouragement you gave the team last Saturday during our game with Darlington. We played well together and Alan Davies' spectacular overhead opening goal set the scene for our 3-0 victory and took us into the vital PLAY-OFF stage.

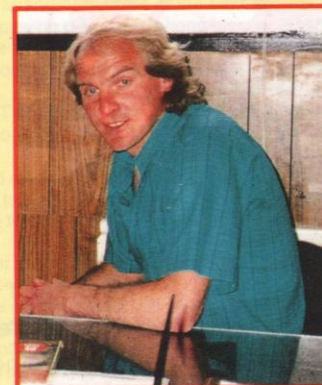
This afternoon we welcome Rotherham United and their manager Billy McEwan in the First Leg of the Semi-Final Play Off and play the return at their Millmoor Ground on Wednesday 18 May.

We must produce the same form this afternoon as we did last Saturday to entertain the winners of the Torquay/Scunthorpe Semi-Finalists at the Vetch on 25 May.

As I write these notes we are preparing to have a welcome four day break at Aberystwyth to ease the pressure and get us fighting fit for the Rotherham game.

I am hoping that we will double the 4,000 attendance this afternoon — Rotherham are a good team — they will certainly go all out to stay in the Third Division and I look forward to your cheers to start us on the road to PROMOTION.

Enjoy yourselves — we will do our best!



TERRY YORATH

WELSH CUP FINAL AT THE VETCH
CARDIFF v. WREXHAM
Tuesday 17 May, Kick Off 7.30 pm

Enjoy a touch of elegance

ORLANDOS
CASTLE GARDENS, SWANSEA

FIRST CLASS LUNCHES SERVED
Mon. to Sat. 12 noon - 2.30 pm
Superb decor and atmosphere

Tel: (0792) 48863

CROFT GARAGE

Yugo
MAIN DEALER

NEATH SA11 1RW
Tel: NEATH 65272





WARNING TV SURVEILLANCE

This ground is equipped with
**CLOSED CIRCUIT
TELEVISION**

Installed with the help of a grant from the Football Trust. It is there to increase crowd safety and to help the police. Recording facilities enable film and photographs to be taken of disorder, which may subsequently be used in a court of law. The Football Trust is funded entirely by the pools companies Littlewoods, Vernons and Zetters from their Spotting-the-Ball competition.

VALMATICS (Swansea) Ltd

Amusement
Machines

PRINCE OF WALES
DOCK, SWANSEA

Telephone Swansea 42788

"Support the Swans"

E. O'KELLY Building Contractor

1 BRYNGOLEU TERRACE
SKETTY, SWANSEA SA2 9DW



COMMERCIAL &
RESIDENTIAL
GRANT WORK
FREE QUOTATION

(0792) 296862

Brickwork, Carpentry, Plastering, etc.
New House Building Undertaken,
No Job Too Small or Large, Complete
House Extensions/Renovations.
Also Window Replacements,
Cladding & uPVC Fascias, Guttering

LOCAL AUTHORITY APPROVED
INSURANCE SCHEME AVAILABLE
REFERENCES SUPPLIED BY PREVIOUS
CUSTOMERS

Club News . . .

SWANSEA CITY SUPPORTERS CLUB

Good afternoon and a warm welcome to Rotherham United today's game at the Vetch Field.

Away Travel News

WEDNESDAY MAY 18th 1988 - ROTHERHAM.
Depart Dunvant 12.15pm; Gasworks 12.30pm. Price £7.50. Pick ups en route. Please book early, by 'phoning Pat on Swansea 299335 or Cheryl on Swansea 73322, or the Club Shop on Swansea 462584. Please ask for the 'Supporters Club' when booking. Bookings also being taken by Lynne on the North Bank at half time and after the game today.

Birthday Greetings

To all the Cygnets who's birthdays fall after the end of season, and also to Amanda Gibson who will be 17 years old on the 17th May, from all her friends on the North Bank.

Carlisle Trip

An eventful week-end trip to Carlisle for all who joined us including an entertaining bus journey around the town centre (six times) before we booked into our hotels.

The ref failed to turn up for our Sunday afternoon football match but we were saved by a rather old 'lady' who agreed to do the job for us. I wonder where she got the Wellies from!

On Monday morning we travelled to Gretna Green for a 'wedding' of two or our members, Bob and Bethan.

Sunday night was a super affair with two darts matches against the locals — they won them both — and kept the bar open until late. It must have been very late because some fools returned to their hotels around 3 in the morning. Some party!!

F.O.S.C.F.A. NOTES

We welcome Rotherham United and their supporters after their long journey to the Vetch today.

Away Travel

The away leg at Rotherham is on Wednesday 18th May K.O. 7.30 pm. Times of Departure — Morrision Cross 11.45; Quadrant 12.00. Price — Members £7.50; Non-Members £8.00.

STRICTLY NO ALCOHOL ON BUSES.

Bookings can be made at the North Bank and Centre Stand kiosks or at the Club Shop, William Street or by phoning Peter on 795588 and Ugo on 54534. Deposits must be paid to reserve seats, if no deposit paid we cannot guarantee places.

Football Team News

Buy your tickets for the Presentation Dance on May 27th to be held at The Ukrainian Club, Morrision from Peter or football players, or at the Brooklands, Oxford Street. Price including disco and buffet — £3.00. (A bus will be available from the Brooklands at a reasonable price).

There are only a few tickets left.

Peter hopes to arrange friendlies in the next few weeks — if interested in playing please telephone him on 795588.

A friendly is to be arranged shortly in Aberdare, if interested in playing or supporting please telephone Peter as soon as possible.

Best wishes to Tony from all the boys (he has a broken leg again, trying to play football)!! get well soon.

Other News

Buy lottery tickets and match day programmes from our sellers around the ground and help to boost the club's funds. Please note that our programme is among the best in the Fourth Division at the reasonable price of 50p.

Old programmes for sale at North Bank kiosk from 20p — will have a brand new selection next season.

The Annual General Meeting is to be held on 5th July 1988 at 7.30 pm. Venue - Brooklands, Oxford Street. We are looking for new Committee Members — old and new members cordially invited.

We are restarting a previously successful savings club next season, for details contact Centre Stand or North Bank kiosks at today's game.

We acknowledge an anonymous donation from one of our members 'he' does not want to be named — thank you very much. We repeat the thanks as we are not sure if he has seen it.

P.S. We are pleased to announce to those of you who don't already know that there is a marriage between FOSCFCA and the Supporters Club. Peter our vice chairman and Lynne of the Supporters Club are to be wed on the 4th of June - many congratulations from all your friends at the Vetch.

Thanks to everyone's tremendous support last Saturday and Benny's and Ugo's premonition, we have made it to the play offs, let's give the lads another burst of the famous Swansea roar.

We have been informed by certain members of the Centre Stand fanatics who would rather not be named, that they wish to hear the full version of 'YOU'LL NEVER WALK ALONE' from the North Bank crew.

Belated birthday greetings to Simon of Pyle (1st May), and Richard Balsdon (25 April).

What are we going to do during the close season!!

See you soon.

Millmoor Groun, Rotherham. Tel: (0709) 562434.

HOW TO GET TO THE GROUND — Use Motorway M1 until Junction 24, leave Motorway and follow signs Rotherham A6178. At roundabout take 1st exit into Ring Road and at next roundabout take 1st exit into Masborough Street A6109. Take the 1st turning left into Millmoor for Rotherham Utd RC. There are car parks within easy distance of the ground in Kimberwork Road and Main Street.

W. D. WILKES

GENERAL BUILDER

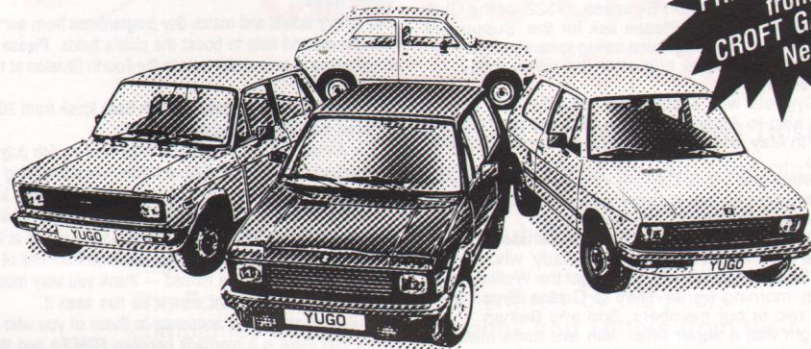
For a friendly, reliable service

TEL: 296149

2 Lon Illtyd, Sketty, Swansea

ESTIMATES
FREE

ARE YOU ON A PROMISE?



PRICE PROMISE
from
CROFT GARAGE
Neath

- OUR MODELS ARE

£1,300 Minimum Part Exchange —

regardless of age or condition against a "YUGO SCORPION"

We promise the lowest possible price on a New Yugo ...

YUGO 311 only £3,049 on the road

DRIVE AWAY PRICE INCLUDES 6 MONTHS TAX
(cash deals only - no part exchange)

**WE GUARANTEE TO BETTER
ANY DEAL OFFERED
ANYWHERE ON A NEW YUGO!**

**- GO ON! - TRY AND
PROVE US WRONG!**

LOW FINANCE 4.9% Flat - 9.6% A.P.R. ALL OFFERS FOR A LIMITED PERIOD ONLY

WANTED: Used Yugo's bought for cash

A new car for only £24.68 p.w.

YUGO CALYPSO — Deposit	£849
Balance	£3,350
Paid monthly - 3 year term	
Weekly equivalent	£24.68
TOTAL PAYMENT	£4,698.48

NO DEPOSIT CARS FOR THE DISABLED

CROFT GARAGE Croft Road, Neath.
Tel: Neath 65272

David Farmer writes...

ROTHERHAM UNITED

Not surprisingly, today's match breaks new ground for us. We have played against Rotherham in the F.A. Cup (1951-52 here at the Vetch - won 3-0); in the old Football League cup (1965 drew 2-2 at Rotherham and won 2-0 here); and in Divisions Two, Three and Four of the English League. Clearly today's match is different from all those, yet it brings with it the potential prize of promotion and/or relegation plus the thrill of a cup game. We can be sure that this will NOT be an end-of-the-season bore. There will be more than the odd tingle surging through the nervous systems of both sets of supporters before the final whistle sounds.

Not that this will have been the first time that such excitement will have swept the ground in matches between our two sides.

Who can ever forget that nerve-tingling game here at the Vetch during our promotion campaign from Division Three? On that hot September evening Rotherham, led by former-Swan Dai Gwyther charged to a 4-1 lead. The 17,065 crowd were dumb-struck, but the Swans fought back to make it a 4-4 draw. Phil Boersma was making his debut that night and, when he came off at the end, he declared himself "shattered". Later that season we won 1-0 at Rotherham

through an Alan Waddle goal and, subsequently won promotion.

Exciting as both those games were, neither was as important as that played almost thirty years earlier at Rotherham. The match was played on 26th April 1952 and we needed to win to avoid being relegated. 14,074 people were in the ground to see the Swans win a tense match (3-1) and save themselves. Beech (C), Medwin and Williams (D) scored for us, whilst White was the home scorer. For those who enjoy re-living yesterday's games, here are the teams which played that day:

SWANS:

King, Kiley, Beech (G), Williams (D), Weston, Thomas, Medwin, Lucas, Turnbull, Allchurch (I), Beech (C).

ROTHERHAM:

Bolton, Selkirk, Williams, Edwards, Gibson, Rawson, White, Wragg, Shaw, Guest, Tomlinson.

But all that was long ago. Today's game is another opportunity for the players to let their adreniline flow and for the crowd to sense the joys and despair which winning and losing bring. I am sure that our visitors will understand our desire to see our team winning. Yet we do so in the proper spirit of Association Football.

THE DUKE 2 WIND STREET, SWANSEA.
TELEPHONE: (0792) 460604.



ALEXANDER PRIVATE HOTEL

3 SKETTY ROAD, UPLANDS, SWANSEA, SA2 0EU Tel: (0792) 470045. All rooms have en-suite bath/shower and toilet, colour TV with video relay, radio alarm clocks, intercom system and tea/coffee making facilities. Direct dial telephones.

AA & RAC Listed

STATION CARPETS

52 ALEXANDRA ROAD, SWANSEA. TEL: 472097

Managing Director
COLIN AUSTIN

SKETTY HOUSE RESIDENTIAL HOME

244 GOWER ROAD, SKETTY, SWANSEA
Caring Environment in Beautiful Surroundings

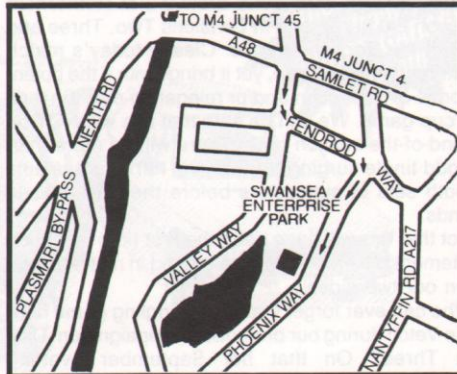
TELEPHONE: 290565 · 290573

SWANSEA

HILTON NATIONAL

Phoenix Way,
Enterprise Park, Swansea,
West Glamorgan SA7 9EG
Telephone: 0792 310330
Telex: 48589

FAX: 0792 797535



- Free hotel car park
- Restaurant. Lakeside Restaurant (à la carte and Carving Table)
- Bar, Lounge Bar (bar snacks served)
- 114 bedrooms with private bath/shower, radio (with alarm clock), colour TV and tea/coffee making facilities
- Gold Star rooms
- Direct dial telephone in all rooms
- In-house movies available in all rooms
- 24 hour room service
- Laundry and dry cleaning services available
- Disabled rooms available
- No smoking rooms available
- Leisure, Sauna, exercise rooms, indoor swimming pool and outdoor training circuit
- Business services available

	Theatre style	Board room	Dinner	School room
Duffryn	30	20	25	10
Tawe	30	40	25	10
Phoenix	30	20	25	10
Enterprise Suite	100	50	100	30
Spectra Suite	—	30	—	25
Spectra Syndicates	—	12	—	8-10



LOCAL INFORMATION

Fairwood Airport, 12 miles
BR Station, 5 miles
M4 Junction 45, 1½ miles
Swansea Town Centre, 2 miles
Gower Coast, 12 miles
Margam Orangery and Park, 8 miles

On the Commercial Front with Tony Russell

On behalf of everyone here at Swansea City I would like to extend a very warm welcome to Mr. Ryland Nixon and his guests from Elms Lodge Country Club, Briton Ferry, which incidentally, with live music every night is an ideal venue for the Over 25s and excellent Sunday lunches is well worth a visit. We trust you will have an enjoyable afternoon and we would like to offer our sincere thanks for the support you are giving the Club.

Those of you who visit the Club Shop regularly will know that the range of merchandise available is gradually increasing, and very shortly we will be introducing a whole new range of leisurewear at highly competitive prices. I strongly recommend you pay us a visit. And remember, not only will you get a good deal you will also help the Club.

ATTENTION ALL EXISTING AND POTENTIAL SPONSORS AND ADVERTISERS

There will be a whole new range of flexible sponsorship and advertising packages available next season which are designed to suit your specific needs. Phone 462584 and ask about —

1. Group and Shared Match Sponsorship
2. Goal Sponsorship
3. Programme Sponsorship.

Finally I would like to welcome my old friends from Rotherham. Like us, they are a very friendly club and I'm sorry we meet in these circumstances. I'll never forget that warm sunny day when being an idiot, I locked my keys in the car and my intended brief visit was extended to an all day one but the way I was looked after turned a disaster into a pleasurable day, I hope your luck takes a turn for the better — after Wednesday night!

20% OFF OFFICIAL TEAM STRIP AVAILABLE ONLY AT THE CLUB SHOP.



Another way to help the Swans next season you will be able to sponsor your favourite player or the whole team for every goal scored.


If you thought Match Sponsorship was beyond your means you were wrong. Contact the Commercial Department and ask about Group and Shared Sponsorship. Be in at the re-birth! Contact the Commercial Department for further details.

**THE S.C. IS COMING
LOOK OUT FOR IT.**




**GOWER
WHOLESALE
BUTCHERS LTD.**

**THE ABATTOIR, THREE CROSSES, SWANSEA
Tel: (0792) 873473**




JOE ALLON
Kindly sponsored by
SWANSEA COMPANY
ARMY CADET FORCE
To join —
Telephone Swansea 402093



KERI ANDREWS
Kindly sponsored by
TUDOR COURT HOTEL
300 Oystermouth Road,
Swansea.
Tel: 50389



CHRIS COLEMAN
Kindly sponsored by
A. OWEN JOHN & Co.
Chartered Accountants
Mardy Chambers, 6 Wind Street
Swansea. Tel: 0792 52325/6




ALAN DAVIES
Kindly sponsored by
YSTRADGYNLAIS
FOLLOWERS OF
SWANSEA CITY



GARY EMMANUEL
Kindly sponsored by
F.O.S.C.F.A.
comfortable away travel
Tel: Peter or Ugo
795588 / 54534



CHRIS HARRISON
Kindly sponsored by
ALFREDO
Coiffures
15 Belle Vue Way, Swansea.
44 Morfydd St, Morriston.



DAVID HOUGH
Kindly sponsored by
SWANSEA PRISON
Sports & Social Committee



MIKE HUGHES
Kindly sponsored by
Aberdare Followers of
Swansea City AFC

**S
P
O
N
S
O
R

A

K
I
T

1
9
8
7
-
8
8**




TOMMY HUTCHISON
Kindly sponsored by
David R. Morgan
Insurance Services
Tel: 0792 43052



ALAN KNILL
Kindly sponsored by
SKETTY HOUSE
RESIDENTIAL HOME
244 Gower Road, Sketty,
Swansea. Tel: 590565/290573




DUDLEY LEWIS
Kindly sponsored by
SKETTY HOUSE
RESIDENTIAL HOME
244 Gower Road, Sketty,
Swansea. Tel: 590565/290573




SEAN MCCARTHY
Kindly sponsored by
JOHN ROONEY
ROYAL LIFE HOLDINGS
Tel: Office Hrs. 476812
Home: Cymmer 851639




ANDREW MELVILLE
Kindly sponsored by
Pickfords
WORLD WIDE MOVING
Tel: Swansea 43973



COLIN PASCOE
Kindly sponsored by
Aberdare Followers of
Swansea City AFC

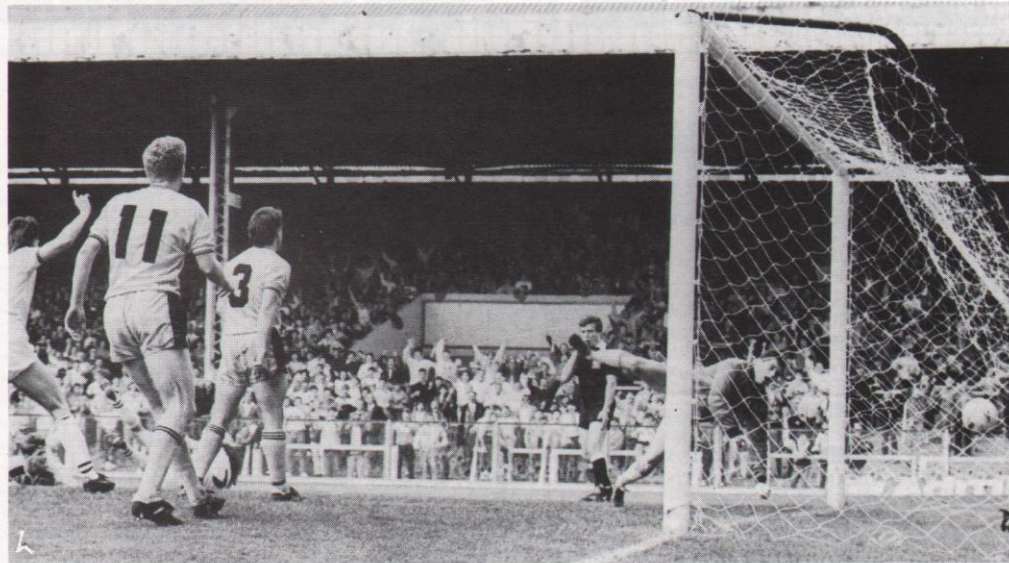


PAUL RAYNOR
Kindly sponsored by
ALFREDO
Coiffures
15 Belle Vue Way, Swansea.
44 Morfydd St, Morriston.



PHIL WILLIAMS
Kindly sponsored by
SHARPE & FISHER
(BUILDING SUPPLIES)


ACTION REPLAY



A spectacular overhead kick by Alan Davies (No. 7) between the legs of Gary Morgan (No. 3) beats Darlington goalkeeper Keith Grainger and starts the Swans on the PLAY-OFF trail. Sean McCarthy (left) raises his right hand in salute to a great goal.



JOHN LEWIS
Kindly sponsored by
CHELTHENHAM & GLOUCESTER
BUILDING SOCIETY
11 Union St, Swansea SA1 3EF
Tel: 0792 463776



ROBBIE JAMES
Kindly sponsored by
EDWARD, LYN & ARWYN



SIMON DAVEY
kindly sponsored by
RAY HUGHES,
SEA ANGLING TRIPS
(Girl Alison 2nd)
Tel: 404667

No Parking Problems at S & G Tyres — pay us a visit!!



S. & G. TYRES

SWANSEA 587861
UNIT 7
CWMDU INDUSTRIAL
ESTATE,
FFORESTFACH,
SWANSEA

**CALL OR RING.
THE PRICE
IS RIGHT !!**

- ★ WHEEL BALANCING
- ★ PUNCTURES
- ★ BATTERIES
- ★ OPEN 7 DAY'S A WEEK

PROGRAMMES WANTED

One of Britain's largest programme dealers requires quality collections from all clubs irrespective of season. Buyer will collect from your home or pay carriage costs. Excellent prices given especially for pre-1960 material.

Please contact —

P. C. RICHES

5 Station Parade, Dorchester
Road, Northolt Park, Middx
UB5 4PD. 01-423 6677

Today's Referee

Mr. Lester Shapter lives at Torquay, South Devon. He is a retired Police Officer, married with five children.

He commenced refereeing in South Devon in 1956 but gave up after two seasons. Started again in 1964. Joined Western League Line in 1966, Referees List in 1969. Football League Line in 1971 and the Referees List in 1973.

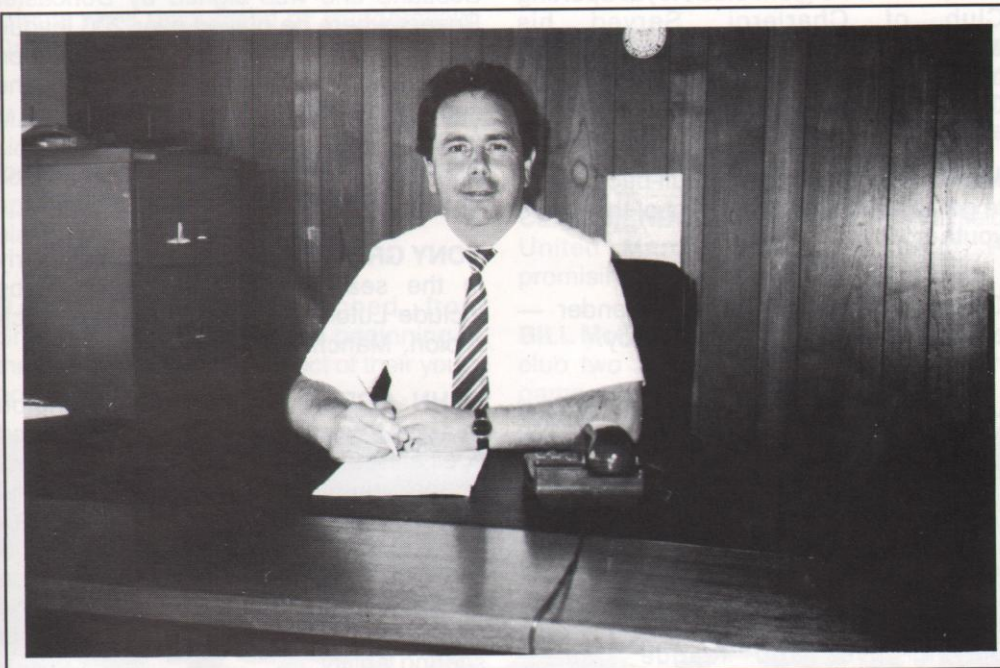
The most important matches in which he has officiated are:
10.5.72 Linesman England v. Italy - Amateur Internationals.
1.10.75 Linesman European C.W. Cup, Sachserring Zwickam v. Panathirakos Athen
20.8.81 Linesman Charity Shield Tottenham H. v. Aston Villa
9.2.82 Referee League Cup Semi-Final Liverpool v. Ipswich
15.2.83 Referee Milk Cup Semi-Final Manchester Utd. v. Arsenal
4.3.86 Linesman UEFA Cup Quarter Final Sporting Lisbon v. F.C. Köln
5.4.87 Referee Littlewoods Cup Final Arsenal v. Liverpool
May 87 Referee Second Leg of Semi-Final and Final of League Play-Offs.

He is interested in Running and Brass Banding. 'Hates' being called 'Les'.

On 4 July 1987 he was elected President of Association of Football League Referees and Linesmen.

Special Tribute . . .

CHAIRMAN DOUG SHARPE'S SPECIAL TRIBUTE TO THE LOYAL FANS OF SWANSEA CITY F.C.



This afternoon's match with the MERRY MILLERS from Rotherham will, I feel sure, go down in the Swans history ranking in importance with our entry into the First Division.

I take this opportunity to offer my sincere thanks for the generous SUPPORT received from the Clubs fans who have shown so much patience and above all LOYALTY during our struggle for existence — and now our fight for promotion to the Third Division.

Every effort is being made to restore Swansea City F.C. to its rightful place in the higher Divisions and I call on you to cheer on the lads this afternoon as you did

against Darlington at the Vetch last Saturday.

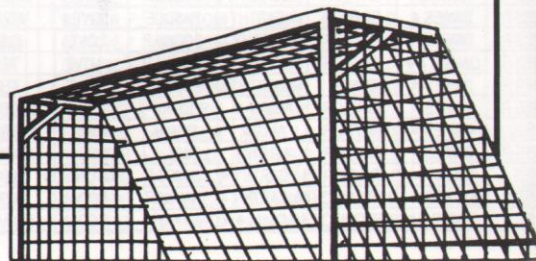
We were all thrilled to see you show your appreciation at the end of our 3-0 victory and Manager Terry Yorath and team took great heart from this demonstration of SUPPORT.

Enjoy the match and remember, I cannot achieve SUCCESS without your support. I conclude with a sincere THANK YOU and the message that I, the Directors and Manager will do our best to ensure entertaining and successful football at the Vetch Field, Swansea.

DOUG SHARPE

Score every time with the Evening Post & Herald of Wales

*Top of the League for advertising
and match reports
Tel: 50841 for details*



Welcome to today's Visitors . . . Rotherham

PEN PICS SEASON 1987/88

CARL AIRY Signed during the close season from Belgium club Royal Sporting Club of Charleroi. Served his apprenticeship at Barnsley before moving on to Darlington and a loan period at Chesterfield last season.

MARK ASH A strong right full-back. Likes to get forward well; a product of the Clubs youth policy.

GREG BURROWS Central defender — product of the Clubs youth policy.

JOHN BUCKLEY Born E. Kilbride; played for QPR, Partick Thistle, Doncaster Rovers, Leeds. Signed from Leeds for £35,000 early this season.

WINSTON CAMPBELL A mid-field or forward player joined Barnsley from school; was a product of their youth policy playing over 100 league games. Transferred to Rotherham in the summer of 1986 following the departure of Tommy Tynan.

PHIL CROSBY A former England Youth International who joined Rotherham Utd from Grimsby Town. A competitive player whose whole-hearted approach is well respected at Millmoor.

IAN DENNIS Right full-back — a product of the Clubs youth policy.

JOHN DUNGWORTH At his eighth league club John, who also has over 100 league goals to his credit, is a hard working forward who is always looking to make himself available for the ball.

COLIN DOUGLAS Originated from Scotland and was signed by Doncaster Rovers where he played over 200 league games and was their leading goalscorer on occasions, joined Rotherham United in the summer of 1986.

SHAUN GOODWIN Mid-fielder — product of the Clubs youth policy.

TONY GREALISH Joined Rotherham early in the season 1987-8; previous clubs include Luton, Brighton, West Bromwich Albion, Manchester City.

JOHN GREEN Signed from Darlington mid-way through last season. In his second spell at Rotherham United again a product of the youth policy. A strong powerful central defender.

PAUL HAYCOCK A product of non-league football; signed from Burton Albion in the summer of 1986. Forward player with goal scoring ability.

NIGEL JOHNSON Rejoined the club from Manchester City for his second spell with the Millers. Was first spotted playing for Laughton. A product of the youth policy; a tall, strong central defender.

GILES NEWCOMBE Goalkeeper — a product of our youth policy.

KELHAM O'HANLON Goalkeeper — 1985 summer signing from Middlesbrough whom he joined from school. Now in his third season at Millmoor and whilst he has been with Rotherham he has gained International honours.

NIGEL PEPPER Midfield player — a product of our youth policy.

DARAL PUGH Welsh Under-21 player who started his career at Doncaster before his talents were recognised by Huddersfield. Daral is a sharp flank forward.

MARTIN SCOTT Product of the nursery side. Sheffield Boys player signed as a schoolboy and made the grade through the apprentice ranks. Very talented young player.

DAVID TOMLINSON Signed from Sheffield Wednesday at the beginning of the season 1987-8. A product of their youth policy.

RAY WARBURTON Central defender a product of the youth policy of the club.

ANDY WILLIAMS A product of non-league football. He was signed by Coventry from Solihull Borough, transferred to Rotherham United in October 1986 in a part-exchange deal with Dean Emerson.

CLIVE MENDONCA Signed from Sheffield United March 1988 for £15,000. A promising young striker, 19 years old.

BILL McEWEN Manager has been with the club two weeks, in charge of his fourth game.



ROTHERHAM UNITED FOOTBALL CLUB - 1987/88

Back row (left to right): John Breckin (Assistant Manager), Ray Warburton, Colin Douglas, John Dungworth, Paul Haycock, Kelham O'Hanlon, Andy Morris (now Chesterfield), Giles Newcombe, Nigel Johnson, John Green, Carl Airey, Andy Williams, Phil Chambers (Reserve and Youth Team Coach). Middle row: Mr. N. Darnill (Secretary), Winston Campbell, Martin Scott, Mr. B. Peacock (Director), Mr. K. F. Booth (Chairman), D. Cusack (Player/Manager), Mr. R. Hull (Vice-Chairman), Mr. C. A. Luckock (Director), Tony Grealish, Phil Crosby. Front row: Shaun Goodwin, Nigel Pepper, Gareth Evans, John Buckley, David Tomlinson, Mark Ash, Ian Dennis, Greg Burrows.

SCENE FOUR . . .

FEATURING NEWS
AND INFORMATION
FROM THE
FOURTH DIVISION

DIVISION FOUR SCENE with TONY NAKONECZNYJ

With the tremendous excitement generated by last weekend's 3-0 home victory over Darlington still reverberating around the streets of the city, we come to today's first stage of the play off system to take Third Division Rotherham in what is sure to be another of those nerve racking encounters that have occurred at the Vetch Field this past decade or so. The manner in which the Swans overcame a hard working Darlington outfit suggests that the side may have found their form at the right moment, with a brilliant overhead goal from Alan Davies followed by an equally well executed free kick routine neatly finished off by Sean McCarthy. After this afternoon's fixture, the team goes to Millmoor for the second leg of the semi final on Wednesday 18th May. Success over the two legs would see us play the final, again over two legs, on the 25th and 28th of this month against the winners of the Scunthorpe v. Torquay semi final.

Scunthorpe must have felt that they had done enough to warrant an automatic promotion place after the 2-1 win at Torquay last weekend with goals from Flounders and Richardson, but Bolton earned that spot by virtue of the 1-0 win at Wrexham, courtesy of a Robbie Savage strike that gave them the three points.

Elsewhere Leyton Orient missed the sixth spot as a result of their 2-0 home defeat by Champions Wolverhampton Wanderers, where goals from Dennison and Robinson claimed the spoils and allowed our lads to secure that very important play off position. Hard luck story also for Peterborough who as forecast in last weeks notes went to Crewe and kept a clean sheet in a 1-0 victory — just five goals conceded in their past fourteen games — but missed out on a play off spot due to an inferior goal difference to ourselves.

Hope you enjoy this afternoon's game.



GRAND THEATRE

SWANSEA (0792) 475715

SWANSEA CITY COUNCIL PRESENTS

LONDON CONTEMPORARY DANCE THEATRE

2 New Programmes
MAY 17-21

WEST SIDE STORY

MAY 30 - JUNE 4
Ask for special offer details

CAMELOT

Gendros Amateur Operatic
Society
MAY 23-28

FUR COAT & NO KNICKERS

JUNE 13-18

BOOK NOW!

BOX OFFICE OPEN 9.30am to 8.30pm MONDAYS TO SATURDAYS

TEL: 0792 475715

ACCESS/VISA WELCOME

P.C. & P.T. MORGAN NEWSAGENT & VIDEO LIBRARY

100 Eversley Road, Sketty, Swansea.



WE'RE TALKING FOOTBALL.

"It's worse than losing a war, a national crisis of the biggest magnitude."

LORD WIGG,
after Poland had knocked out England, 1973.

"I suppose it will be an all-ticket match."

DANNY BLANCHFLOWER,
on being put into the reserves.

"There is a rat in the camp trying to throw a spanner in the works."

CHRIS CATTIN,
Brighton manager, 1983.

"The best team always wins. The rest is only gossip."

JIMMY SIRREL,
Notts County manager, 1985.

YOU'RE

BETTER OFF

TALKING TO

BARCLAYS

Spotlight on the Reserves and Youth Teams

by Ron Walton

Reserves Last Monday evening the Reserves won 1-0 against Cardiff City at Ninian Park. David D'Auria scoring the vital goal in the first half. This was our last Reserve team match of the season. Gary Emmanuel, Dudley Lewis and Phil Williams played with John Lewis and Ian Love feeling no ill effects after the full 90 minutes.

Youth Team On Tuesday at Merthyr's Pedyarren Park we came away with a great 4-0 victory over Merthyr in the Quarter Final of the Youth Cup. David D'Auria and Mark Coates each netting 2 goals. After the Play Off against Rotherham on Sunday we will play Cardiff Corries in the Semi-Final of the National Youth League Cup.

Injured List Joe Allon is showing improvement and along with Keri Andrews they both expect to have their plaster cut off shortly. David Hough is still waiting the all clear from the specialist.

All at the Vetch Field hope the First Team will prove successful in the Play Offs and make it to the Third Division.

TOP SCORE

FIRST DIVISION:

McClair (Manchester Utd) 29; Aldridge (Liverpool), Rimmer (Watford - 27 Chester) 28; Rosenior (West Ham - 22 Fulham) 27; Chapman (Sheffield Wed) 24; Clough (Nottingham Forest) 22.

SECOND DIVISION:

Quinn (Swindon) 31; Currie (Barnsley - 23 Darlington) 30; Stewart (Manchester City) 28; Bright (Crystal Palace), Platt (Aston Villa - 21 Crewe) 26; Sheringham (Millwall) 24.

THIRD DIVISION:

Nelson (Brighton) 32; Crown (Southend - 12 Cambridge) 29; Lovell (Gillingham) 27; McParland (Notts Co) 26; Waller (Chesterfield), Gabbiadini (Sunderland - 2 York) 24.

FOURTH DIVISION:

Bull (Wolves) 52; Muir (Tranmere), Thomas (Bolton) 28; Flounders (Scunthorpe) 26; Baker (Hartlepool) 25.



Here are ten good reasons why you should buy a club replica kit:

1. You will look great in it.
2. Your girlfriend, boyfriend, uncle, grandad etc. will look great in it.
3. You can look (and play ?) like the new star signing.
4. Our wives and kids need the money.
5. Some visiting talent scout may make you an offer you can't refuse.
6. All your mates are buying it.
7. Your mum will think you look lovely in it.
8. Your favourite colour is White.
9. The team likes to see that you support them.
10. They have been ordered specially for you — so don't disappoint us.

From the Club Shop and good local Sports Shops
LET US SHOW THE TEAM THAT WE SUPPORT THEM:

Admiral

Radio Vetch

THE VOICE OF
THE SWANS WITH
JAMES LEWIS

Football for the Family

Generally it's been a good season for football. Attendances have been up by nearly 3 per cent, which means they have increased in successive years for the first time since England's World Cup victory stimulated interest in the game more than two decades ago.

Liverpool have dominated the game bringing it to a new level. Like, Daglish's men, Bradford City found tragedy in 1985, but now play to capacity crowds. Middlesbrough in the hands of a receiver less than two years ago also played to large crowds this season. In the third Sunderland won over their public again, and in the fourth Wolves despite their financial uncertainty also regained their honour and support.

This time last year Lincoln were doomed, now we welcome them back to the throng. Proving in football, all is never lost, they have won the GM Championship at the first attempt, and had a very successful year financially.

As we can testify many more clubs now have something to play for, right to the end of the season. The public want matches with meaning. They want competition, which is why the Sherpa Van Cup for third and fourth division clubs boasts the biggest audience increase of any competition this season.

Behaviour has varied this season culminating in the fine on Swindon's Chris Kamara. Sensibly, the league has acted saying clubs will have points deducted for persistent transgression.

And then there was Robert Maxwell. Can you imagine what would have happened if Watford, Oxford and Derby had been fighting relegation or whatever all owned by the Maxwell empire?

However, the league have once again shown that they



are out of touch with the majority of their supporters. How — the Mickey Mouse Centenary celebrations! A gigantic flop best forgotten!

At all levels, goals came from jammed offside traps, which is encouraging.

Finally and most importantly the Swans are in the play off! As I said at the beginning of the article — it's been a good season for football!
JAMES LEWIS



TONY NAKONECZNYJ

MOTOR INSURANCE

SPECIAL RATES FOR NEW MOTORISTS - YOUNG DRIVERS SCHEME
DISCOUNTS FOR SELECTED OCCUPATIONS

General Business-Household - Caravan - Sickness - Fire
Liabilities - Commercial

- ★ LIFE ASSURANCE
- ★ INVESTMENTS
- ★ PENSIONS
- ★ LOANS
- ★ MORTGAGES (inc. Council House Purchase)
- ★ REMORTGAGES (Written Details on request)
- ★ AGENTS FOR THE LEEDS PERMANENT BUILDING SOCIETY

50 High St.
Clydach

Tel: SWANSEA (0792)
843246 (days); 816294 (eves)



Grayston Scaffolding

CONTRACTING COMPANY OF BET ACCESS PLC · A BET PLANT SERVICES COMPANY

To gain access to:

- ADVICE ON TENDER SPECIFICATIONS
- FREE DESIGN SERVICE
- ACCURATE, CONSISTENT AND COMPETITIVE QUOTATIONS

THE PREMIER SCAFFOLDING SERVICE
NEW CUT ROAD, SWANSEA SA1 8AF

Tel: (0792) 470815

ONORS...MITRE MATCH BALL DONORS...MITRE

PAULO WELCOMES YOU TO LA BUSSOLA Restaurant: 217 Oxford St Tel: 55780/43596 Ristorante Italia: 73 St Helens Rd, Swansea Tel: (0792) 465506	LEMAS uPVC WINDOWS & DOORS Tel: 43478	THE GOLDEN HIND The Marina Swansea	SWANSEA TIMBER & PLYWOOD CO. Oxford Street Swansea Tel: 55680	APEX Packaging (Swansea) Co. Ltd. Unit 1, Gorof Road, Ynyscedwyn Est., Ystradgynlais	
 Why not buy your SPORTING POST after the game TEL: 50841	LEON LYONS LYONS GLASS WORKS SWANSEA	ANTHONY JOHN MATHIAS 14 YEARS OLD	TEAMSEED LTD. ELECTRICAL ENGINEERS Swansea 50676	PETER ALAN AND CO. Estate Agents The Kingsway Swansea Tel: 41481	SWANSEA CITY SUPPORTERS CLUB
SKETTY HOUSE RESIDENTIAL NURSING HOME 244 Gower Road, Sketty, Swansea Tel: 290565/290573	SIDOLI BROS. Porthcawl FISH & CHIP RESTAURANTS	SWANSEA TRUCK CENTRE CWMUDU IND. EST. FFORESTFACH Tel: 582255	DENNIS THE FARMERS ARMS SWANSEA TEL: 52324	ROBIN Gorseinon Travel FLY WITH US! TEL: 896565	W.G. DAVIES LTD. MOT REPAIRS HAULAGE Morriston 71473
Sweetman's Bakeries Morriston . Mumbles Gorseinon . Llanelli TEL: 798268	H. PHILLIPS ELECTRICAL Cookers, Washing Machines, etc. MORRISTON 73039	ALAN NORMAN SKIP HIRE PENCLAWDD 851011	EXUMA PLANT PORT TALBOT 94 881567	Kilfield Construction Building & Civil Engineers NEATH 55535	CASEY ROOFING LANDORE TEL: 456155
PELMARBOND LIMITED PONTARDAWE Fabricators of Formica & Decamel 0792 865297	KINGS HEAD MOTORS MOTs . CAR HIRE All types of mechanical work. Forestfach 586144	MORGAN HEMP & CO CHARTERED ACCOUNTANTS Swansea 466428	Palace Refrigeration Catering Equipment SWANSEA 52333	NEW SWANSEA VALLEY CARPETS Pontardawe 863711	R.D. Howells Menswear Proprietor: Byron Jenkins. High St., Swansea Tel: 52750
WOODLANDS Country Club Park Rd., Clydach TEL: 842565 Prop. Bob Rushton	SELWYN JENKINS SPORTS LTD.	VIVIAN G. EVANS PORTHCAWL	Tyre Maintenance Supplies For all your Garage Equipment SWANSEA 583454	DUDLEY & SWANSEA METALS FFORESTFACH 587611	T. J. SCAFFOLDING LTD. SWANSEA 790689 PORT TALBOT 887663
GERALD DAVIES LTD Industrial landscaping and Sports Ground construction Pontarddulais 882717	DEE JAY SKIP HIRE GORSEINON 893809	VAUGHAN SOUND SYSTEMS LTD Langdon Rd., Prince of Wales Dock S'sea 54133/54145	BRIAN ISAAC COACHES For all types of hire SWANSEA 468162	Colin Williams S.W.V.C. Co. Discount Ltd. Domestic appliances Refrigeration Engineers Industrial Cleaning GORSEINON 892134	SOCIETY CLUB HIGH STREET SWANSEA TEL: 55227
GOYTRE UNITED A.F.C. Tel: 0639 898983	WYNDAM REES GRAND HOTEL High St, Swansea Tel: 50541	BRISCO WILLIAMS & SONS CALOR GAS Gorseinon 894961	CLIFF DOEL GOWER AUTOS BRUCE ROAD FFORESTFACH TEL: 586371	K & J BRAKES & HOSES LTD Tel: Swansea 51219/460582	SWANSEA TRUCK CENTRE CWMUDU IND., EST. FFORESTFACH Tel: 582255 LEYLAND

ONORS...MITRE MATCH BALL DONORS...MITRE

Tel: Peter 795588		<h2>FOSCFA</h2>		Tel: Ugo 54534	
FRIENDS OF SWANSEA CITY FOOTBALL ASSOCIATION FOR YOUR SAFE, COMFORTABLE AWAY TRAVEL					
KEITH CHUGG THE PIANO MAN Tel: 472477	S & G TYRES Ltd FFORESTFACH SWANSEA TEL: 587861	TIM Pick-Up-Spares SWANSEA Landore 52816 Winch Wen 71701 Ammanford 4436	LOFT RITE CONVERSIONS TREBOETH SWANSEA 790848/581891	ILLTYD THOMAS Transport Tel: 582636	SKETTY GARAGE Gower Road, Swansea Tel: 203030
SWANSEA CITY GARAGE MOT . CRYPTON TUNING Heol-Y-Gors Tel: 470921	T & R PHILLIPS TRANSPORT OF SWANSEA 71195/701722	SWANSEA AUTO ENGINE Brandon Greaves Swansea 792010	HAWKES COACHES TOURS AND CONTRACT WORK TEL: 873056	Ken Williams Garage Forestfach Industrial Estate Queensway Tel: 587605	A.H. GOW BUILDING CONTRACTORS Ravenhill Road Tel: 581891
VINCE DAVIES FAIRWOOD PARK GOLF CLUB TEL: 203648	<h2>WEST WALES FOOTBALL ASSOCIATION</h2>				



-official suppliers of goals in today's game



DELTA 4000



QUATRO



QUALITY COMES FIRST



